

Welcome to the Next Generation of Giclée Printing

Ah, let'em go...

*He only grabbed
the Giclée Print!*



PRINTS

*so real even the
most discernible
critic won't be able
to tell ours from
the original!*



THE COLOR GROUP

creative + print services

We're your creative partner!

Giclée Fine Art Printing



Fine Art Scanning



Canvas Printing & Stretching



PlexiPrints®



Bamboo Accents®



Large Format



Framing



Mounting & Lamination



About Giclée

(zhee-CLAY)

A giclée is a skillfully crafted, high-quality reproduction printed with museum quality pigmented inks and the finest archival art papers available. The results are breathtaking prints with incredible details and vibrant, yet nuanced gradations and tones. This level of print detail, coupled with the latest in color matching technology, gives us the ability to match your originals like nothing you have ever seen.

Giclées can be printed on a wide variety of media including canvas, watercolor paper, photographic papers, baryta darkroom fiber rag and transparent film. Giclées are superior to traditional lithography in nearly every way. The colors are purer, last longer and print in so much detail that they are virtually ‘continuous tone’, rather than tiny dots. Since we can use media in rolls, large print sizes are available up to 100’ long.

Giclée print technology offers artists a perfect solution with tons of options. Reproduce your art on-demand at any size and on your choice of a variety of media to make each piece customized to your specific needs. We also offer a ton of finishing options so you can repurpose your art to achieve endless effects. Stop in or check out our website to see samples of our work... We’re sure you’ll find something to inspire you!



THE COLOR GROUP

creative + print services

Preparing and Sending Files

Step 1 Capturing your original

Depending on your medium, you may need to have your original artwork digitized. We offer several options. First, if you have your files digitally, you can simply upload them through our website (www.thecolorgroup.com) or send them to us on disc. If your original is a painting, we can digitize it on our drum scanner (original sizes up to 18×24). In order to drum scan your original, the artwork will have to be wrapped around a cylinder. This will not harm your original in any way and offers the best possible capture. However, if your original is not bendable or if it is larger than 18×24, it will need to be photographed. Shooting artwork requires a special large-format scanning camera. We advise our clients to avoid shooting their art themselves unless they have the appropriate equipment.

Step 2 Preparing color

Getting from your original to the final reproduction requires color correction. How much correction depends on many variables such as how the original was digitized, the medium and color range and your expectation. We have the ability to match most pieces with the utmost in precision and detail. Every piece is unique and requires various amounts of work but rest assured our team will work closely with you to produce a final product that you will be more than happy with.

Step 3 Proofing

For color critical pieces, we generally go through several rounds of proofs. The proof is actually printed on the same machine and same substrate as your final, but usually printed at a smaller size or just a section of the image to save on costs. Proofs are not required but are recommended as it is impossible to judge what the final piece will look like by viewing it on a monitor.

Step 4 Finishing

Many options are available to put the finishing touches on your piece. Let us know what you are planning to use your print for and we'll present you with several choices. We often get experimental so visit our website for examples of our work - thecolorgroup.com.

Pricing

Fine Art Papers

Arches Aquarelle, Arches Rag Photographique, Hahnemühle German Etching, Hahnemühle Photo Rag Bright White, LYVE Canvas

Sizes	Print Only	Print w/ Foamcore	Print w/ Gatorboard
8 × 10	\$21	\$36	\$39
11 × 14	\$28	\$43	\$46
12 × 16	\$34	\$54	\$57
14 × 18	\$42	\$62	\$65
16 × 20	\$50	\$70	\$73
18 × 24	\$59	\$79	\$82
20 × 24	\$65	\$85	\$90
20 × 30	\$79	\$104	\$109
22 × 28	\$81	\$106	\$110
24 × 30	\$94	\$119	\$129
24 × 36	\$109	\$139	\$144
28 × 34	\$114	\$147	\$160
30 × 36	\$128	\$166	\$181
30 × 40	\$144	\$186	\$202
36 × 48	\$192	\$252	\$276
40 × 50	\$215	\$284	\$312
40 × 60	\$248	\$331	\$365
48 × 48	\$234	\$314	\$346
48 × 60	\$293	\$393	\$433
48 × 72	\$342	\$462	\$510
60 × 72	\$418	\$570	\$630
48 × 96	\$441	\$601	\$665

Photographic Papers

Ilford Galerie Prestige Smooth Pearl, Hahnemühle Baryta Photo Rag®, Sunset Photo Metallic, Duratrans Backlit Film

Sizes	Print Only	Print w/ Foamcore	Print w/ Gatorboard
8 × 10	\$20	\$35	\$38
11 × 14	\$25	\$40	\$43
12 × 16	\$31	\$51	\$54
14 × 18	\$38	\$58	\$61
16 × 20	\$42	\$62	\$65
18 × 24	\$50	\$70	\$73
20 × 24	\$54	\$74	\$79
20 × 30	\$65	\$90	\$96
22 × 28	\$67	\$92	\$96
24 × 30	\$78	\$103	\$113
24 × 36	\$93	\$123	\$131
28 × 34	\$101	\$134	\$147
30 × 36	\$112	\$150	\$165
30 × 40	\$120	\$162	\$178
36 × 48	\$165	\$225	\$249
40 × 50	\$181	\$250	\$278
40 × 60	\$205	\$288	\$323
48 × 48	\$199	\$279	\$311
48 × 60	\$238	\$338	\$378
48 × 72	\$283	\$386	\$434
60 × 72	\$342	\$480	\$540
48 × 96	\$357	\$517	\$581

Volume discounts available: Qty: 5-10 = 10% | Qty: 11-19 = 15% | Qty: 20 or more = 20% | Prices include borders up to 2"

Fine Art Scanning

Capturing your original

Turning your paint into pixels is the first step in fine art reproduction and requires not only professional scanning equipment, but also skill and experience. Without a professional capture of your original, the quality of your giclée print will be inferior. Our color experts utilize high-resolution scanners capable of capturing all of the subtle details and tones of your original. We are able to scan many different types of media including watercolors, canvas, photographs, transparencies, and more. For oversized art, we use a digital scan-back camera with professional lighting to achieve excellent results

All scans come with a printed proof and CD (or File Link). We also keep your file on our server for convenient reordering.

Drum Scanning

File Size	Price	Print Size
In Megabytes	Scan To Disk	Approximated at 300dpi
50MB	\$41 ⁹⁵	11 x 15
100MB	\$57 ⁹⁵	16 x 24
200MB	\$69 ⁹⁵	24 x 30
300MB	\$97 ⁹⁵	30 x 40
400MB	\$119 ⁹⁵	40 x 50
500MB	\$131 ⁹⁵	50 x 60
600MB	\$147 ⁹⁵	60 x 70

Flat Bed Scanning

Price	Original Size
Scan To Disk	
\$20	8 x 10
\$25	10 x 12
\$30	11 x 14
\$45	12 x 16
\$65	16 x 20
\$70	18 x 24
\$85	20 x 30

Photo Shoot

Price
Scan To Disk
\$150
We may be able to shoot more than one original at a time depending on size and depth of artwork.

Arches® Aquarelle

Cold Press (Textured) 310 gsm. Museum grade fine art watercolor paper that is 100% cotton rag, mould-made, lignin and acid-free.



Arches® Rag Photographique

Hot Press (Smooth) 310 gsm. Rag Photographique is a 100% cotton museum quality, lignin and acid-free fine art and photographic paper with a unique extra smooth surface.



Hahnemühle German Etching

310 gsm. This heavyweight etching board is velvety smooth with a fine surface texture. Excellent ink density (dmax) and color gamut.



Hahnemühle Photo Rag® Bright White

310 gsm. The smooth surface and bright white point make this paper very versatile. It is ideal for printing both black and white and color photographs.



Breathing Color Lyve® Canvas

450 gsm. This bright-white, award-winning canvas provides eye-popping color gamut and dmax, coupled with critical archival certification. The relatively smooth Oxford 2 over 1 weave is ideal for photo and art reproduction.



Ilford Galerie Prestige Smooth Pearl

310 gsm. Traditional heavyweight resin coated paper with a superb color gamut. It's smooth pearl finish makes this a great choice for professional photographic prints.



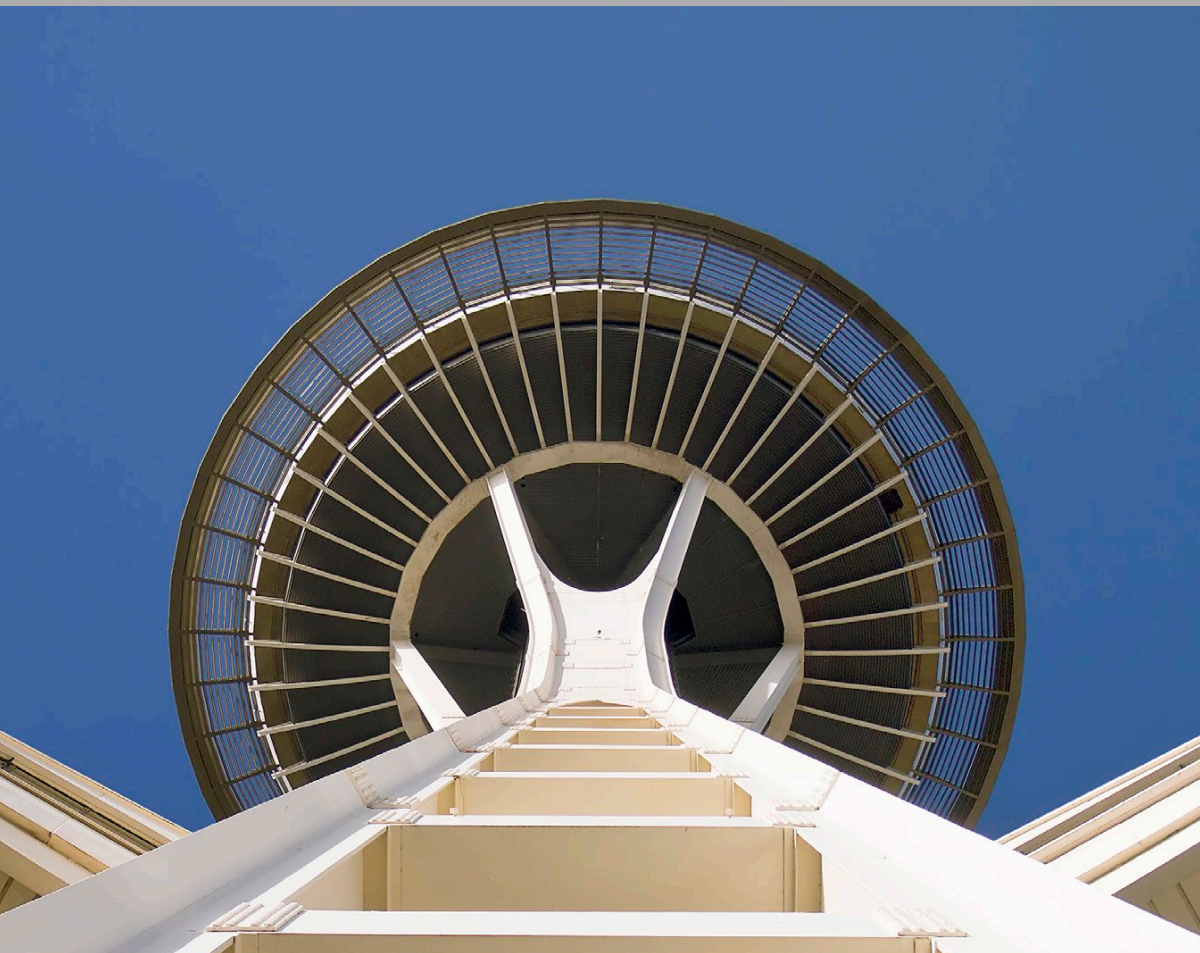
Hahnemühle Photo Rag® Baryta

315 gsm. Luxury 100% cotton paper with a traditional Baryta surface. Deep dark blacks and ultra-bright highlights enables you to create stunning prints that previously could be output only in a darkroom.



Sunset Photo Metallic

255 gsm. Designed for photographers and artists seeking to enhance their images with a vibrant metallic look. The metallic, high-gloss surface transforms images with lifelike, almost 3D quality.



Duratrans Backlit Film

8.5 mil, 77% Opacity. Extremely high-resolution backlit film for professional backlight display applications. Excellent choice for creating sharp, vivid prints for illuminated displays.



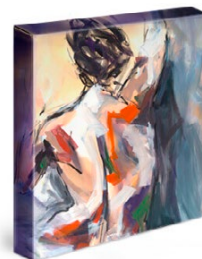
Canvas Printing & Stretching

Give depth and texture to your art!

You are going to be amazed at the richness and detail that can be achieved when printing on our museum-quality canvas. All of our canvas stretches are made to order, so you can choose any size you wish. We fabricate our own stretcher bars from high-quality kiln-dried poplar wood and have perfected the art of stretching so your canvas will be as tight as a drum with no unsightly staples or folds. This gallery-wrap technique makes your canvas print a perfect finished product ready to hang. Of course, we finish each canvas off with all hanging hardware installed and even your choice of protective coating at no extra charge.

Fine Art Canvas Wraps & Loose Canvas Prints

Sizes	Canvas Wraps	Loose Canvas Prints	Float Frame Canvas Wrap
8 × 10	\$53	\$21	\$160
11 × 14	\$85	\$28	\$200
12 × 16	\$99	\$34	\$220
14 × 18	\$125	\$42	\$248
16 × 20	\$133	\$50	\$265
18 × 24	\$142	\$59	\$285
20 × 24	\$157	\$65	\$319
20 × 30	\$190	\$79	\$350
22 × 28	\$193	\$81	\$355
24 × 30	\$221	\$94	\$390
24 × 36	\$230	\$109	\$410
28 × 34	\$240	\$114	\$420
30 × 36	\$268	\$128	\$430
30 × 40	\$295	\$144	\$475
36 × 48	\$378	\$192	\$595
40 × 50	\$390	\$215	\$615
40 × 60	\$450	\$248	\$690
48 × 48	\$448	\$234	\$680
48 × 60	\$549	\$293	\$800
48 × 72	\$599	\$342	\$865
60 × 72	\$695	\$418	\$985
48 × 96	\$740	\$441	\$1050



Bamboo Accents®

Our Bamboo Accents line offers the perfect fusion of art and nature with a bold, modern presentation set on a backdrop of the timeless elegance of sustainable forested bamboo. Say ohmmm!

Specifications:

Photo print face-mounted to acrylic.

Floated on finished bamboo backer* with metal standoffs.

Standard hanging hardware (wire or saw-tooth).

Pricing Guide:*

Print (common sizes)	Backer (bamboo)	Standard (photo paper)	Metallic (metallic paper)
9 x 12	13 x 16	\$135	\$155
11 x 14	15 x 18	\$145	\$165
12 x 16	16 x 20	\$160	\$180
14 x 18	18 x 22	\$200	\$220
16 x 20	20 x 24	\$215	\$240
18 x 24	22 x 24	\$240	\$265
20 x 24	24 x 28	\$255	\$285
20 x 30	24 x 34	\$330	\$360
24 x 36	28 x 40	\$410	\$460

*Above pricing is based on standard options which include photo-based print, 1/8" acrylic (up to 1/4"), 1/2" x 3/4" satin finish standoffs, 1/2" bamboo, and wire or saw-tooth hanging hardware. For custom size, call for pricing.

Options:

Choose several photo-based finishes including matte, satin, gloss and metallic.

Standoff hardware comes in several finishes and variable lengths.

Bamboo backer is available in blond¹ and carbonized². Additionally, two thicknesses are offered: 1/2" (standard) and 3/4".

Hanging hardware includes either wire or saw-tooth or upgrade to a French-cleat hanging system.



Custom finishes may be available for an additional charge.

PlexiPrints®

Bring a modern look and feel to any room with our Face Mounted PlexiPrints®. Archival metallic photographic paper optically face-mounted to museum grade acrylic brings added depth and makes images glow with an otherworldly shimmer. The result is an unbelievably rich and vibrant look with an incredible amount of saturation.

Specifications:

Photo print mounted to 1/8" acrylic with 3mm black Sintra backer and Nielsen Framing float mount system.

Pricing Guide:*

Print (common sizes)	Gloss (photo paper)	Metallic (metallic paper)
9 x 12	\$95	\$115
11 x 14	\$105	\$125
12 x 16	\$115	\$135
14 x 18	\$120	\$140
16 x 20	\$145	\$175
20 x 24	\$185	\$215
20 x 30	\$255	\$285
24 x 36	\$320	\$365
30 x 40	\$375	\$420
36 x 48	\$450	\$500
40 x 60	\$550	\$600

* For custom size, call for pricing.



Options:



Substrates:

Choose metallic or gloss photo-base for a unique, yet elegant look.

Acrylic:

In addition to our standard 1/8" acrylic, we offer a thickness of 3/16" and 1/4".

Backer:

There are several backers you may choose from including thicker Sintra (up to 1/2"), another sheet of acrylic and even bamboo. Of course, you may choose to have no backer at all.

Hanging Solutions:

In addition to our standard Nielsen float mount system, we offer brushed Nickel Stand-Offs as well as solid wood Silhouette Float Frames with a wide variety of sizes and finishes to choose from.



*now,
let's get going...*

Ready to start a project?

Or maybe you have some more questions. Either way, it's easy to work with us. You can submit your job through our website, mail it, or come over and drop it off in person.

We'll be waiting!

1741 4TH AVE S., SUITE B
SEATTLE, WA 98134
WWW.THECOLORGROUP.COM



THE COLOR GROUP

creative + print services